



The Scottish Parliament  
Pàrlamaid na h-Alba

# A new law about parking



## Survey to tell us what you think

Please send this survey back by  
Friday 6<sup>th</sup> November 2015





The Scottish Parliament want to know what you think about a new law about parking.

You can read more about the new law by clicking [this link](#).

Please fill in this survey to tell us what you think.



Please send the survey back by 5pm on Friday 6th November 2015.



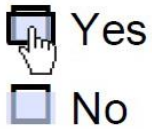
You can fill in the survey on your computer.



Or you can print out the survey and fill it in with a pen.

## If you are filling in this form on a computer...

Please follow these steps:

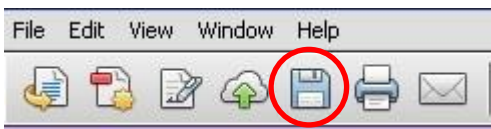


1. Click the box next to the answer you want to choose for each question.

Please tell us more:

I think...|

If you want to you can type more information into the box for each question.



2. When you have finished the form, save it to your computer.

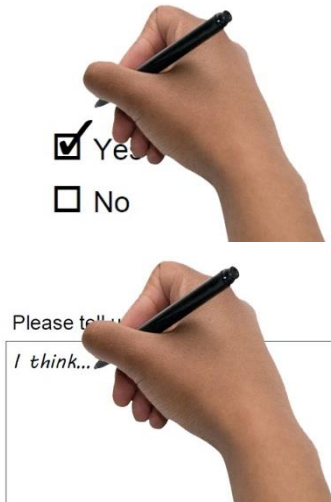


3. Send the form as an attachment in an email to:  
[lgr.committee@scottish.parliament.uk](mailto:lgr.committee@scottish.parliament.uk)

## If you are filling in this form with a pen...

Please follow these steps:

1. Tick the box next to the answer you want to choose.



If you want to you can write more information in the box for each question.

2. When you have finished the form, post it to...



Local Government and  
Regeneration Committee  
Committee Office  
Scottish Parliament  
Edinburgh  
EH99 1SP



**1. Have you had any problems with a vehicle parked on the pavement?**

☐ Yes

☐ No

Please tell us more:



**2. Have you had any problems with a vehicle parked in front of a dropped kerb?**

A dropped kerb is where the pavement dips down.

☐ Yes

☐ No

Please tell us more:



**3. Have you had any problems with a vehicle parked too far away from the pavement?**

☐ Yes

☐ No

Please tell us more:

# Emergency vehicles

Emergency vehicles are things like...

- ambulances
- fire engines
- police cars and motorbikes.

The new law says that emergency vehicles are still allowed to park...



- on the pavement
- in front of a dropped kerb
- far away from the pavement.

## 4. What do you think about this?

- ☐ They should be allowed to do this
- ☐ They should not be allowed to do this
- ☐ I don't know

Please tell us more:

--



# Pulling up to wait

The new law says drivers are allowed to pull up for a short time to wait for a very small number of reasons...



- on the pavement



- in front of a dropped kerb



- away from the pavement.

## 5. What do you think about this?

- ☐ They should be allowed to do this
- ☐ They should not be allowed to do this
- ☐ I don't know

Please tell us more:

## People parking outside their own house



The new law says people will be allowed to park in front of a dropped kerb outside their own house.

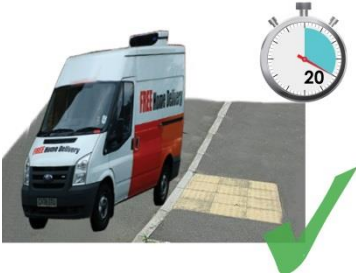
### 6. What do you think about this?

- ☐ They should be allowed to do this
- ☐ They should not be allowed to do this
- ☐ I don't know

Please tell us more:

# Delivery trucks and vans

The new law says if delivery trucks are collecting or delivering something...



- they are still allowed to park in front of a dropped kerb for up to 20 minutes



- they are still allowed to park away from the pavement for up to 20 minutes.

## 7. What do you think about this?

- ☐ They should be allowed to do this
- ☐ They should not be allowed to do this
- ☐ I don't know

Please tell us more:

# Bin lorries

The new law says if bin lorries are picking up rubbish they are still allowed to park...



- in front of a dropped kerb



- away from the pavement.

## 8. What do you think about this?

- ☐ They should be allowed to do this
- ☐ They should not be allowed to do this
- ☐ I don't know

Please tell us more:

--

# People working on the road

The new law says if people are working on the road they are still allowed to park...



- in front of a dropped kerb



- away from the pavement.

## 9. What do you think about this?

- ☐ They should be allowed to do this
- ☐ They should not be allowed to do this
- ☐ I don't know

Please tell us more:

--

# Disabled parking spaces

Some disabled parking spaces are...



- on the pavement
- in front of a dropped kerb
- away from the pavement.

The new law says people who have a blue badge will still be allowed to park in these types of disabled parking spaces.

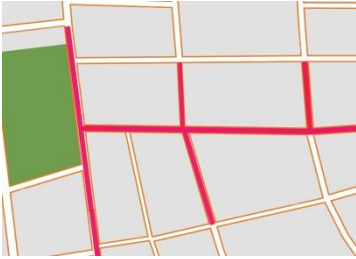
## 10. What do you think about this?

- ☐ They should be allowed to do this
- ☐ They should not be allowed to do this
- ☐ I don't know

Please tell us more:

--

## Some roads where the law would not apply



The new law says local councils can choose roads where the law does not apply.

This means local councils can say that on some roads, drivers are still allowed to...

- park on the pavement
- park in front of a dropped kerb
- park away from the pavement.

### 11. What do you think about this?

- ☐ They should be allowed to do this
- ☐ They should not be allowed to do this
- ☐ I don't know

Please tell us more:

--



**12. Do you think the new law will make things better for you?**

- ☐ Yes
- ☐ No
- ☐ I don't know

Please tell us why you think this:





If someone breaks the new law they will get a parking ticket and have to pay a fine.

**13. Do you think this is a good way to make people follow the law?**

- ☐ Yes
- ☐ No
- ☐ I don't know

Please tell us why you think this:

Thank you for filling in this survey.

This document was created by ENABLE Scotland on behalf of the Scottish Parliament's Local Government and Regeneration Committee. © October 2015